



Vestil Manufacturing Co.

2999 North Wayne Street, P.O. Box 507, Angola, IN 46703
 Telephone: (260) 665-7586 -or- Toll Free (800) 348-0868
 Fax: (260) 665-1339
 www.vestilmfg.com e-mail: sales@vestil.com

CYL-LT-1-HR & CYL-LT-1-PN Cylinder Lifts
 Instruction Manual



After delivery, immediately remove the packaging from the product in a manner that preserves the packaging and maintains the orientation of the product in the packaging; then inspect the product closely to determine whether it sustained damage during transport. **If damage is discovered during the inspection, immediately record a complete description of the damage on the bill of lading.** If the product is undamaged, discard the packaging.

NOTES:

- 1) Compliance with laws, regulations, codes, and non-voluntary standards enforced in the location where the product is *used* is exclusively the responsibility of the owner/end-user.
- 2) Vestil is **not liable** for any injury or property damage that occurs as a consequence of failing to apply either: a) the instructions in this manual; or b) information provided on labels affixed to the product. Neither is Vestil responsible for *any* consequential damages sustained as a result of failing to exercise sound judgment while assembling, installing, using or maintaining this product.

Table of Contents

Product Specifications.....	2
Hazard Identification: Explanation of Signal Words.....	2
Safety Guidelines.....	2
FIG. 1: CYL-LT-1-HR exploded parts diagram & bill of materials.....	3
FIG. 2: CYL-LT-1-PN exploded parts diagram & bill of materials.....	4
Use Instructions.....	5
Inspections & Maintenance.....	6
Label Placement Diagram.....	6
Limited Warranty.....	7

PRODUCT SPECIFICATIONS

Dimensions and other product specifications of standard wrapping machine models appear in the following table:

Model	Wheel type	Overall dimensions	Uniform capacity	Net weight
CYL-LT-1-HR	Hard rubber	18in. x 24in. x 80in. 46cm x 61cm x 203cm	300 lb. 136.4kg	91 lb. 41.4kg
CYL-LT-1-PN	Pneumatic	18in. x 24in. x 80in. 46cm x 61cm x 203cm	300 lb. 136.4kg	66 lb. 30kg

HAZARD IDENTIFICATION: explanation of signal words

This manual uses SIGNAL WORDS to indicate the likelihood of personal injuries, as well as the probable seriousness of those injuries, if the product is misused in the ways described. Other signal words call attention to uses of the product likely cause property damage.

The signal words used appear below along with the meaning of each word:



DANGER Identifies a hazardous situation which, if not avoided, **WILL** result in **DEATH** or **SERIOUS INJURY**. Use of this signal word is limited to the most extreme situations.



WARNING Identifies a hazardous situation which, if not avoided, **COULD** result in **DEATH** or **SERIOUS INJURY**.



CAUTION Indicates a hazardous situation which, if not avoided, **COULD** result in **MINOR** or **MODERATE** injury.



NOTICE Identifies practices likely to result in product/property damage, such as operation that might damage the product.

Each person who assembles, uses, or maintains this product should read the entire manual and fully understand the directions in advance. If after reading the manual you do not understand an instruction, ask your supervisor or employer for clarification, because failure to adhere to the directions in this manual might result in serious personal injury.

SAFETY GUIDELINES

Vestil diligently strives to identify foreseeable hazards associated with the use of its products. However, no manual can address every conceivable risk. The end-user ultimately is responsible for exercising sound judgment at all times.

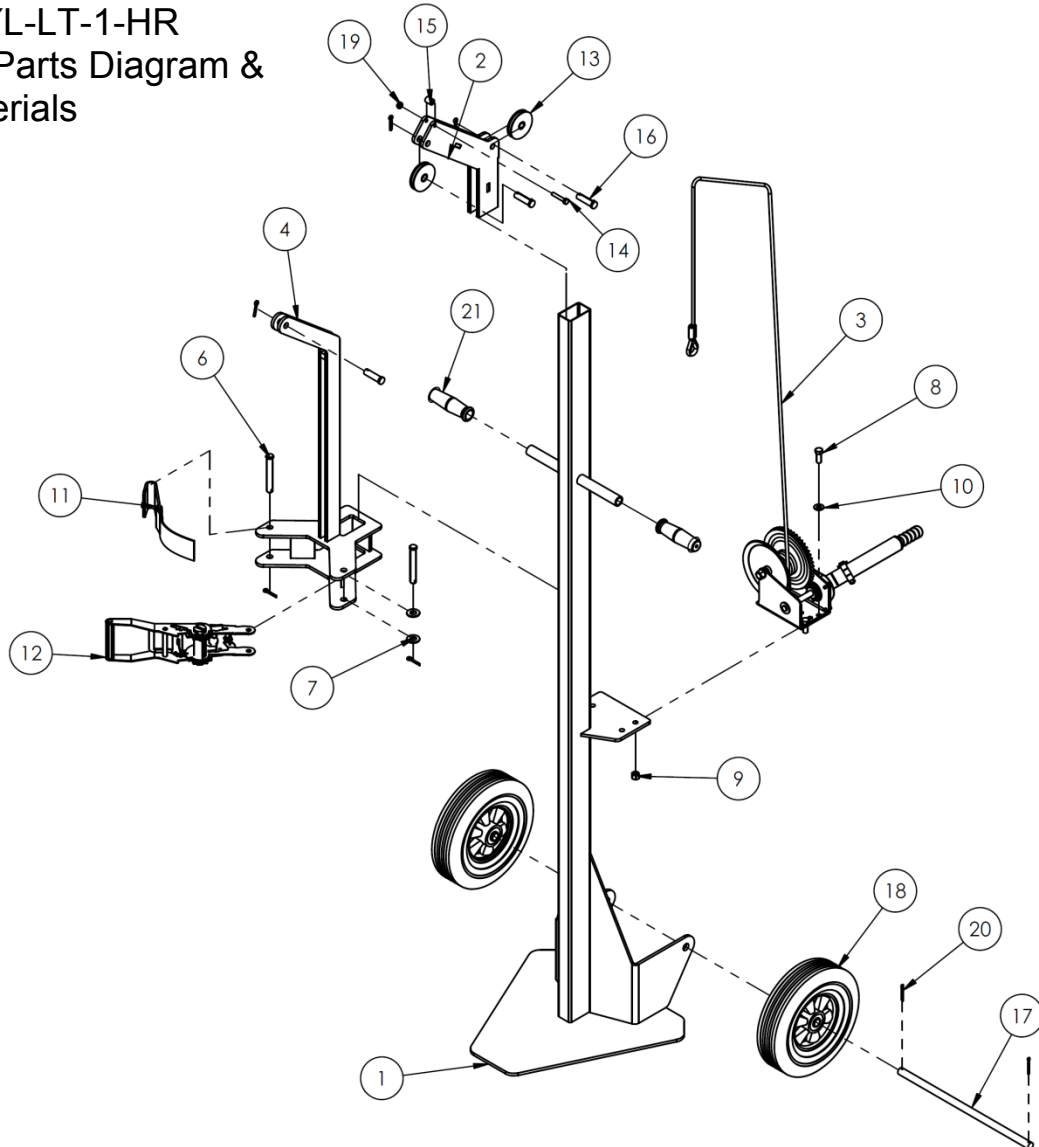


Failure to read and understand the entire manual before using or servicing the product constitutes misuse. Read the manual to refresh your understanding of proper use and maintenance procedures. If this product is used improperly or carelessly, the operator and/or bystanders might sustain serious personal injuries:

- DO NOT exceed the maximum rated load.
- Inspect the lifter before each use. Remove it from service if the inspection reveals damage *such as*: 1) cracked welds; 2) corrosion, extreme wear, or other condition that affects the ability of the product to support weight; 3) significantly worn or damaged wheels/casters; 4) missing or damaged ratchet straps. DO NOT use the product until it is restored to normal condition. ONLY use manufacturer-approved replacement parts.
- DO NOT use the lifter to transport any cylinder that does not seat securely in the brackets.
- DO NOT transport a cylinder unless it is securely held by the ratchet strap. The cylinder should not be able to slide through the strap.
- ONLY raise the cylinder a few inches from the floor when transporting it. When transporting a cylinder up-or-downhill, always remain uphill to the lifter. DO NOT move the lifter up or downhill unless you can easily control the lifter. Although the CYL-HLT is equipped with 2 locking casters, these locks will NOT hold the lifter in place on an incline and will not stop the lifter as it rolls downhill.
- DO NOT leave a raised cylinder unattended. ALWAYS lower the cylinder completely.
- DO NOT store cylinders on the lifter.
- DO NOT remove or obscure any label. All product labels must be readable and undamaged. (See p. 6).

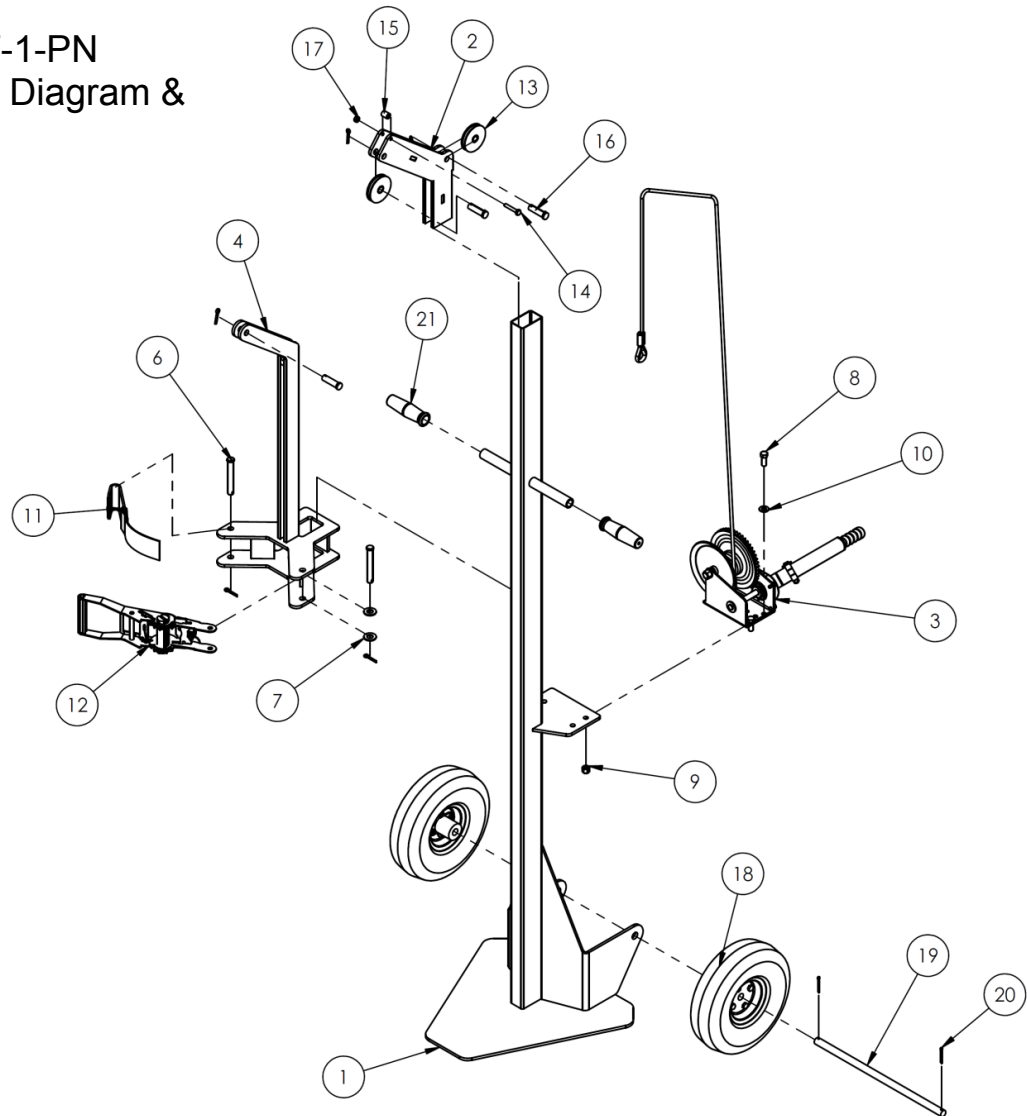
• DO NOT modify the lifter in any way. **Unauthorized modifications automatically void the limited warranty (see p. 7) and might make the lifter unsafe to use.**

FIG. 1: CYL-LT-1-HR
Exploded Parts Diagram &
Bill of Materials



Item no.	Part no.	Description	Quantity
1	16-514-133	Weldment, base, upright	1
2	16-527-008	Weldment, pulley assembly	1
3	16-542-001	Assembly, winch and wire	1
4	16-514-134	Weldment, strap height adjuster	1
5	65104	Cotter pin zinc-plated, $\frac{5}{32}$ in. x $1\frac{1}{4}$ in.	5
6	66121	$\frac{1}{2}$ in. x $3\frac{1}{2}$ in. clevis pin	2
7	33847	Flat washer	2
8	11105	Bolt, HHCS #2 zinc-plated, $\frac{3}{8}$ in. – 16 x 1in.	3
9	37024	$\frac{3}{8}$ in. nylock insert nut	3
10	33008	$\frac{3}{8}$ in. USS flat washer zinc-plated	3
11	30-042-001	Ratchet strap with formed hook	1
12	30-001-093	Ratchet assembly	1
13	42552	Sheave, $\frac{1}{2}$ in. bushing, $\frac{1}{4}$ in. wire rope	2
14	11009	HHCS #2 zinc-plated, $\frac{1}{4}$ in. – 20 UNC x $1\frac{1}{2}$ in.	1
15	0145645	Nylon round space	1
16	21-112-003	Clevis pin	3
17	16-112-019	Axle	1
18	16-132-176	Wheel, 10in. x $2\frac{1}{2}$ in. hard rubber	2
19	37018	Nut, $\frac{1}{4}$ in. – 20 UNC nylock nut zinc-plated	1
20	65078	Cotter pin zinc-plated, $\frac{1}{8}$ in. x $1\frac{1}{2}$ in.	2
21	13-025-025	Rubber handle grip	2

FIG. 2: CYL-LT-1-PN
Exploded Parts Diagram &
Bill of Materials



Item no.	Part no.	Description	Quantity
1	16-514-133	Weldment, base, upright	1
2	16-527-008	Weldment, pulley assembly	1
3	16-542-001	Assembly, winch and wire	1
4	16-514-134	Weldment, strap height adjuster	1
5	65104	Cotter pin zinc-plated, $\frac{5}{32}$ in. x $1\frac{1}{4}$ in.	5
6	66121	$\frac{1}{2}$ in. x $3\frac{1}{2}$ in. clevis pin	2
7	33847	Flat washer	2
8	11105	Bolt, HHCS #2 zinc-plated, $\frac{3}{8}$ in. – 16 x 1in.	3
9	37024	$\frac{3}{8}$ in. nylock insert nut	3
10	33008	$\frac{3}{8}$ in. USS flat washer zinc-plated	3
11	30-042-001	Ratchet strap with formed hook	1
12	30-001-093	Ratchet assembly	1
13	42552	Sheave, $\frac{1}{2}$ in. bushing, $\frac{1}{4}$ in. wire rope	2
14	11009	HHCS #2 zinc-plated, $\frac{1}{4}$ in. – 20 UNC x $1\frac{1}{2}$ in.	1
15	0145645	Nylon round space	1
16	21-112-003	Clevis pin	3
17	37018	Nut, $\frac{1}{4}$ in. – 20 UNC nylock nut zinc-plated	1
18	16-132-199	10in. x $3\frac{1}{2}$ in. pneumatic wheel for $\frac{5}{8}$ in. axle	2
19	16-112-019	Axle	1
20	65078	Cotter pin zinc-plated, $\frac{1}{8}$ in. x $1\frac{1}{2}$ in.	2
21	13-025-025	Rubber handle grip	2

Use Instructions: [Refer to FIGS. 3A and 3B; CYL-LT-1-PN shown]

1. Make sure that the position of the cylinder receiver is adjusted. The top of the cylinder should be close to the angled arm of the receiver.
2. Disconnect the J-hook (connected to the end of the ratchet strap) from the hook pin; then place a cylinder on the platform and maneuver it to seat against the cylinder bracket.
3. If necessary, extend the strap so that it is long enough to wrap around the outside of the cylinder. To extend the strap, pull the ratchet release toward the handle and pivot the handle approximately 180 degrees (to the configuration shown in FIG. 3B). By pulling on the strap now, it will unwind from the spindle. When enough strap has been unwound, let go of the release lever
4. Wrap the ratchet strap around the cylinder and connect the J-hook to the hook pin.
5. Pivot the handle back and forth to tighten the strap against the cylinder.
6. Raise the cylinder a few inches off of the ground by turning the winch handle. Transport the cylinder to the desired location.
7. Before releasing the cylinder, be sure that it is fully and stably supported; then release strap tension by following the procedure described in step 3.

FIG. 3A: Cylinder lifter (Model CYL-LT-1-PN shown)

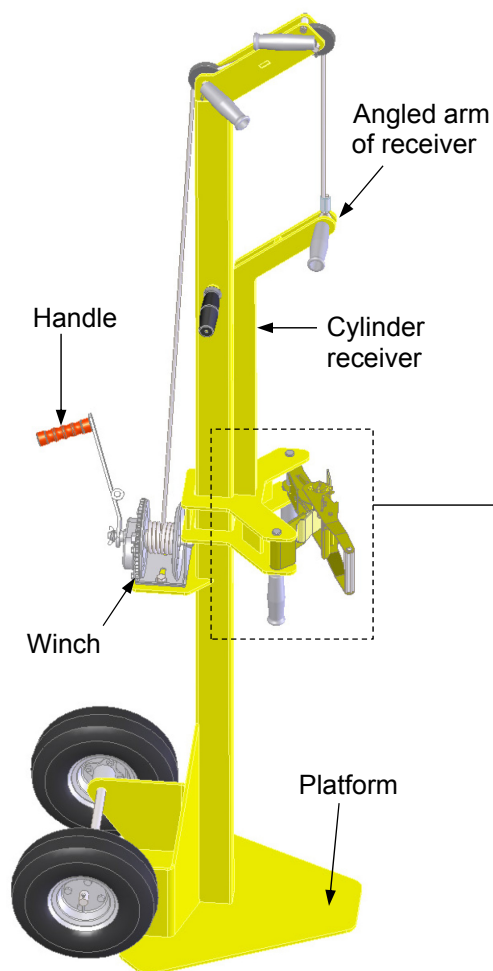
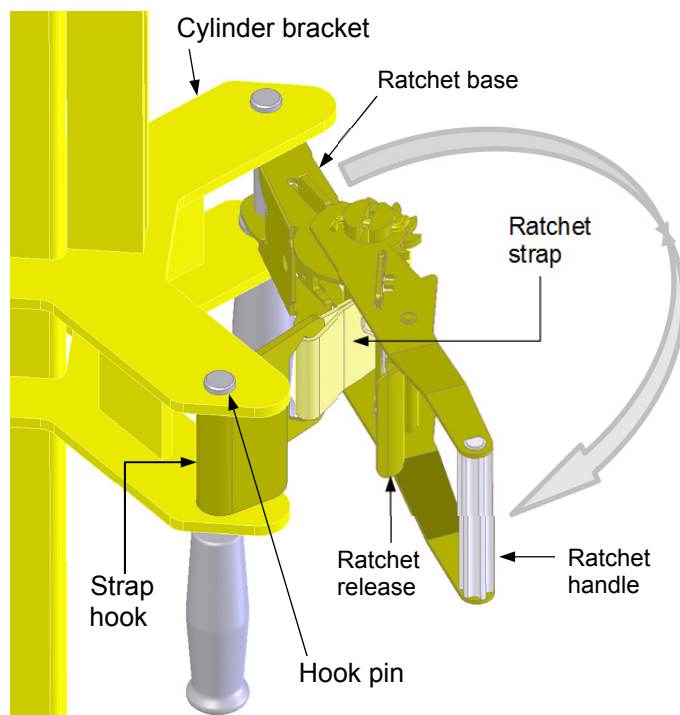


Fig. 3B: Wrap the ratchet strap around a cylinder and slide the J-hooks into the J-hook slots on the back of the divider.



Inspections and Maintenance:

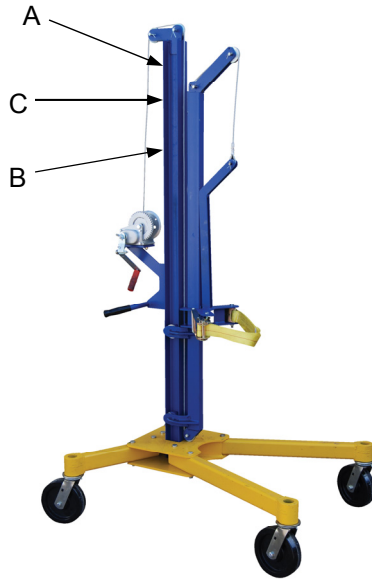
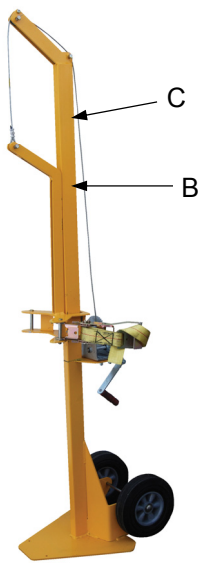
⚠️WARNING DO NOT use the wrapping machine until all problems discovered during an inspection have been resolved.

Inspect the lifter periodically (at least once per month) to confirm normal condition. If the inspection reveals problems, do not use the lifter until it is restored to normal condition.

- Examine the frame for cracked welds, metal fatigue, rust, and corrosion that affects the structural integrity of the lifter. The structure should be clean, square and rigid, and free of rust and corrosion. Remove dirt and debris.
- Inspect the winch and cable. Pulleys should roll smoothly over the cable. The cable should be free of elongations, bird-caging, thinned regions and broken strands. The winch should turn smoothly in both directions and ratchet normally; it should be solidly fastened to the frame of the lifter.
- Check the ratchet and ratchet strap. Confirm normal operation and condition. If either the strap or the ratchet is damaged, tag the unit out of service and install manufacturer-approved replacement parts.
- Inspect the wheels. Confirm that each wheel rolls smoothly and is securely fastened to the lifter. The wheel material should not be cracked, warped etc. and
- Labels: confirm that all labels (shown in "Label placement diagram" on p. 18) are present, undamaged and readable.

Label Placement Diagram

Cylinder lifters should be labeled as shown below.



A (Label 203)



B (Label 287)

MODEL/MODE LO/MODELE	_____
CAPACITY	_____ lbs.
CAPACIDAD/CAPACITÉ	_____ kgs.
SERIAL/SERIE/SÉRIE	_____
VESTIL MANUFACTURING CORPORATION	
sales@vestil.com • www.vestil.com	
	287 REV 02/03

C (Label 728)

⚠️WARNING

Mishandling or careless handling of compressed gas cylinders might result in serious personal injuries.

- Inspect winch, cable, cylinder cradle, ratchet and strap for damage or excessive wear before each use.
- DO NOT use if damaged.
- DO NOT leave a raised cylinder unattended or attempt to transport a raised cylinder. Cylinder should rest firmly on lifter base.
- DO NOT store cylinders on lifter.
- To release ratchet, squeeze release lever and swing handle.

⚠️AVISO

El uso incorrecto o el manejo de los cilindros de gas comprimidos pueden resultar en daños personales severos.

- Inspeccione la llave, el cable, la cuna del cilindro, y amaras por daños o uso excesivos antes de usarlos.
- NO USE si esta dañado.
- No deje el cilindro sin atención cuando este en la posición elevada. El cilindro tiene que estar firme sobre la base del levantador.
- No almacene los cilindros en la levantador.
- Para soltar el agarre, oprima la palanca de agarre y menear la agarradera.

728

LIMITED WARRANTY

Vestil Manufacturing Corporation (“Vestil”) warrants this product to be free of defects in material and workmanship during the warranty period. Our warranty obligation is to provide a replacement for a defective original part if the part is covered by the warranty, after we receive a proper request from the warrantee (you) for warranty service.

Who may request service?

Only a warrantee may request service. *You are a warrantee if* you purchased the product from Vestil or from an authorized distributor AND Vestil has been fully paid.

What is an “original part”?

An original part is a part used to make the product as shipped to the warrantee.

What is a “proper request”?

A request for warranty service is proper if Vestil receives: 1) a photocopy of the Customer Invoice that displays the shipping date; AND 2) a written request for warranty service including your name and phone number. Send requests by any of the following methods:

Mail
Vestil Manufacturing Corporation
2999 North Wayne Street, PO Box 507
Angola, IN 46703

Fax
(260) 665-1339
Phone
(260) 665-7586

Email
sales@vestil.com

In the written request, list the parts believed to be defective and include the address where replacements should be delivered.

What is covered under the warranty?

After Vestil receives your request for warranty service, an authorized representative will contact you to determine whether your claim is covered by the warranty. Before providing warranty service, Vestil may require you to send the entire product, or just the defective part or parts, to its facility in Angola, IN. The warranty covers defects in the following original dynamic components: motors, hydraulic pumps, electronic controllers, switches and cylinders. It also covers defects in original parts that wear under normal usage conditions (“wearing parts”), such as bearings, hoses, wheels, seals, brushes, and batteries.

How long is the warranty period?

The warranty period for original components is 90 days. The warranty period begins on the date when Vestil ships the product to the warrantee. If the product was purchased from an authorized distributor, the period begins when the distributor ships the product. Vestil may extend the warranty period for products shipped from authorized distributors by *up to* 30 days to account for shipping time.

If a defective part is covered by the warranty, what will Vestil do to correct the problem?

Vestil will provide an appropriate replacement for any covered part. An authorized representative of Vestil will contact you to discuss your claim.

What is not covered by the warranty?

1. Labor;
2. Freight;
3. Occurrence of any of the following, which automatically voids the warranty:
 - Product misuse;
 - Negligent operation or repair;
 - Corrosion or use in corrosive conditions;
 - Inadequate or improper maintenance;
 - Damage sustained during shipping;
 - Accidents involving the product;
 - Unauthorized modifications: DO NOT modify the product IN ANY WAY without first receiving written authorization from Vestil. Modification(s) might make the product unsafe to use or might cause excessive and/or abnormal wear.

Do any other warranties apply to the product?

Vestil Manufacturing Corp. makes no other express warranties. All implied warranties are disclaimed to the extent allowed by law. Any implied warranty not disclaimed is limited in scope to the terms of this Limited Warranty.

